



ROHS REPORT

Applicant: XonTel Technology Trd. Co. W.L.L
 Address: Kuwait City , Qibla , Aladel Tower , F21 , state of Kuwait.
 zip code : 13065

Manufacturer: XonTel Technology Trd. Co. W.L.L
 Address: Kuwait City , Qibla , Aladel Tower , F21 , state of Kuwait.
 zip code : 13065

The following samples were submitted and identified on behalf of the clients

Sample Name: Mini Server
 Model No.: XonTel MS PBX
 Brand Name: XonTel
 Sample Received Date: Sep 28, 2020
 Test Period: Sep 28, 2020 to Oct. 14, 2020
 Test Method: Please refer to next pages

Result Summary:

Item	Test parameter	Conclusion
1	RoHS Directive 2011/65/EU Annex II amending Annex (EU)2015/863 and amending Annex (EU)2017/2102. ---Lead(Pb), Cadmium(Cd), Mercury(Hg), Hexavalent Chromium(CrVI), PBBs and PBDEs, DBP, BBP, DEHP, DIBP	PASS

Signed for and on behalf of


 Lris Ma
 Approved Signatory

Prepared By:
 Shenzhen Jialian Testing Consulting Co., Ltd.
 5/F, 7 Building, XinYuan Industrial Park, Xili Town, NanShan District, ShenZhen City

Sample Description:

This Test Report is issued by the Company subject to its General Conditions of Service printed overleaf. Attention is drawn to the limitations of liability, indemnification and jurisdictional policies defined therein. The results shown in this test report refer only to the sample(s) tested unless otherwise stated and the sample(s) are retained for 30 days only. This Test Report cannot be reproduced, except in full, without prior written permission of the Company.



Test Report

No.JQL200928699-3R

Date: Oct. 13, 2020

Page 2 of 7

No.	Part Name
1	Silver Metal Shell
2	Copper Inductor Coil
3	PCB
4	Solder
5	Mixed all Metal Part
6	Mixed all nonmetallic parts

This Test Report is issued by the Company subject to its General Conditions of Service printed overleaf. Attention is drawn to the limitations of liability, indemnification and jurisdictional policies defined therein. The results shown in this test report refer only to the sample(s) tested unless otherwise stated and the sample(s) are retained for 30 days only. This Test Report cannot be reproduced, except in full, without prior written permission of the Company.



Test Report

No.JQL200928699-3R

Date: Oct. 13, 2020

Page 3 of 7

Pb,Cd, Hg,Cr(VI), PBBs, PBDEs Test Results:

Test item	MDL (mg/kg)	Result (mg/kg)						Limit (mg/kg)
		1	2	3	4	5	6	
Lead(Pb)	2	N.D.	N.D.	N.D.	N.D.	N.D.	N.D.	1000
Cadmium(Cd)	2	N.D.	N.D.	N.D.	N.D.	N.D.	N.D.	100
Mercury(Hg)	2	N.D.	N.D.	N.D.	N.D.	N.D.	N.D.	1000
Hexavalent Chromium(CrVI)	8	N.D.	N.D.	N.D.	N.D.	N.D.	N.D.	1000
Sum of PBBs	-	N.D.	N.D.	N.D.	N.D.	N.D.	N.D.	1000
Monobromobiphenyl	5	N.D.	N.D.	N.D.	N.D.	N.D.	N.D.	--
Dibromobiphenyl	5	N.D.	N.D.	N.D.	N.D.	N.D.	N.D.	--
Tribromobiphenyl	5	N.D.	N.D.	N.D.	N.D.	N.D.	N.D.	--
Tetrabromobiphenyl	5	N.D.	N.D.	N.D.	N.D.	N.D.	N.D.	--
Pentabromobiphenyl	5	N.D.	N.D.	N.D.	N.D.	N.D.	N.D.	--
Hexabromobiphenyl	5	N.D.	N.D.	N.D.	N.D.	N.D.	N.D.	--
Heptabromobiphenyl	5	N.D.	N.D.	N.D.	N.D.	N.D.	N.D.	--
Octabromobiphenyl	5	N.D.	N.D.	N.D.	N.D.	N.D.	N.D.	--
Nonabromobiphenyl	5	N.D.	N.D.	N.D.	N.D.	N.D.	N.D.	--
Decabromobiphenyl	5	N.D.	N.D.	N.D.	N.D.	N.D.	N.D.	--
Sum of PBDEs	-	N.D.	N.D.	N.D.	N.D.	N.D.	N.D.	1000
Monobromobiphenyl ether	5	N.D.	N.D.	N.D.	N.D.	N.D.	N.D.	--
Dibromobiphenyl ether	5	N.D.	N.D.	N.D.	N.D.	N.D.	N.D.	--
Tribromobiphenyl ether	5	N.D.	N.D.	N.D.	N.D.	N.D.	N.D.	--
Tetrabromobiphenyl ether	5	N.D.	N.D.	N.D.	N.D.	N.D.	N.D.	--
Pentabromobiphenyl ether	5	N.D.	N.D.	N.D.	N.D.	N.D.	N.D.	--
Hexabromobiphenyl ether	5	N.D.	N.D.	N.D.	N.D.	N.D.	N.D.	--
Heptabromobiphenyl ether	5	N.D.	N.D.	N.D.	N.D.	N.D.	N.D.	--
Octabromobiphenyl ether	5	N.D.	N.D.	N.D.	N.D.	N.D.	N.D.	--
Nonabromobiphenyl ether	5	N.D.	N.D.	N.D.	N.D.	N.D.	N.D.	--
Decabromobiphenyl ether	5	N.D.	N.D.	N.D.	N.D.	N.D.	N.D.	--

Note:

1. 1ppm=1mg/kg=0.0001%
2. N.D.=Not Detected (less than MDL)
3. MDL=Method Detection Limit
4. "--" = Not Regulate

This Test Report is issued by the Company subject to its General Conditions of Service printed overleaf. Attention is drawn to the limitations of liability, indemnification and jurisdictional policies defined therein. The results shown in this test report refer only to the sample(s) tested unless otherwise stated and the sample(s) are retained for 30 days only. This Test Report cannot be reproduced, except in full, without prior written permission of the Company.



Test Report

No.JQL200928699-3R

Date: Oct. 13, 2020

Page 4 of 7

Phthalate Test Results:

Test item	MDL (mg/kg)	Result (mg/kg)		Limit
		3	6	
Dibutyl phthalate (DBP)	50	N.D.	N.D.	1000
Butyl benzyl Phthalate(BBP)	50	N.D.	N.D.	1000
Bis-(2-ethylhexyl)phthalate(DEHP)	50	N.D.	N.D.	1000
Di-iso-butyl ortho-phthalate (DIBP)	50	N.D.	N.D.	1000

Note:

1. 1ppm=1mg/kg=0.0001%
2. N.D.=Not Detected (less than MDL)
3. MDL=Method Detection Limit

RoHS Directive (EU)2015/863 amending Annex II to Directive 2011/65/EU

Test Method: With reference to IEC 62321-4:2013, IEC62321-5:2013, IEC 62321-7-2:2017,
IEC 62321-6:2015 and IEC62321-8:2017,analyzed by ICP-OES, UV-Vis and
GC-MS.

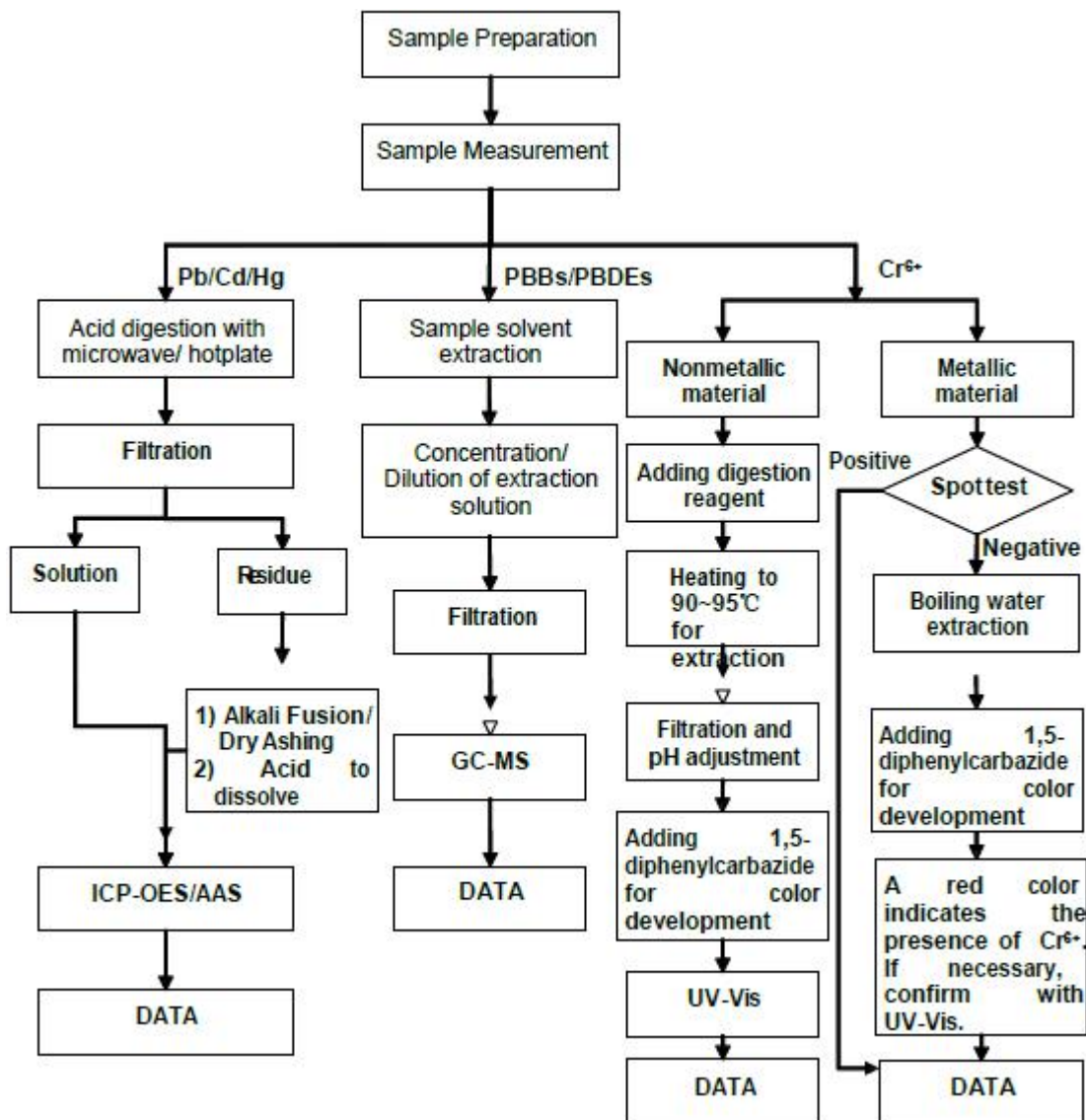
This Test Report is issued by the Company subject to its General Conditions of Service printed overleaf. Attention is drawn to the limitations of liability, indemnification and jurisdictional policies defined therein. The results shown in this test report refer only to the sample(s) tested unless otherwise stated and the sample(s) are retained for 30 days only. This Test Report cannot be reproduced, except in full, without prior written permission of the Company.



ATTACHMENTS:

RoHS Testing Flow Chart

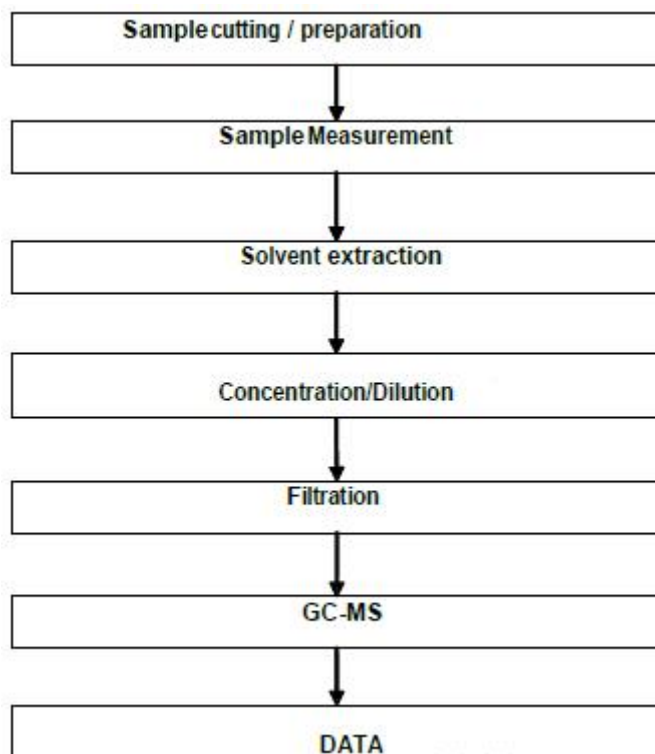
These samples were dissolved totally by pre-conditioning method according to below flow chart (Cr6+ and PBBs/PBDEs test method excluded).



This Test Report is issued by the Company subject to its General Conditions of Service printed overleaf. Attention is drawn to the limitations of liability, indemnification and jurisdictional policies defined therein. The results shown in this test report refer only to the sample(s) tested unless otherwise stated and the sample(s) are retained for 30 days only. This Test Report cannot be reproduced, except in full, without prior written permission of the Company.



HBCDD Testing Flow Chart



This Test Report is issued by the Company subject to its General Conditions of Service printed overleaf. Attention is drawn to the limitations of liability, indemnification and jurisdictional policies defined therein. The results shown in this test report refer only to the sample(s) tested unless otherwise stated and the sample(s) are retained for 30 days only. This Test Report cannot be reproduced, except in full, without prior written permission of the Company.



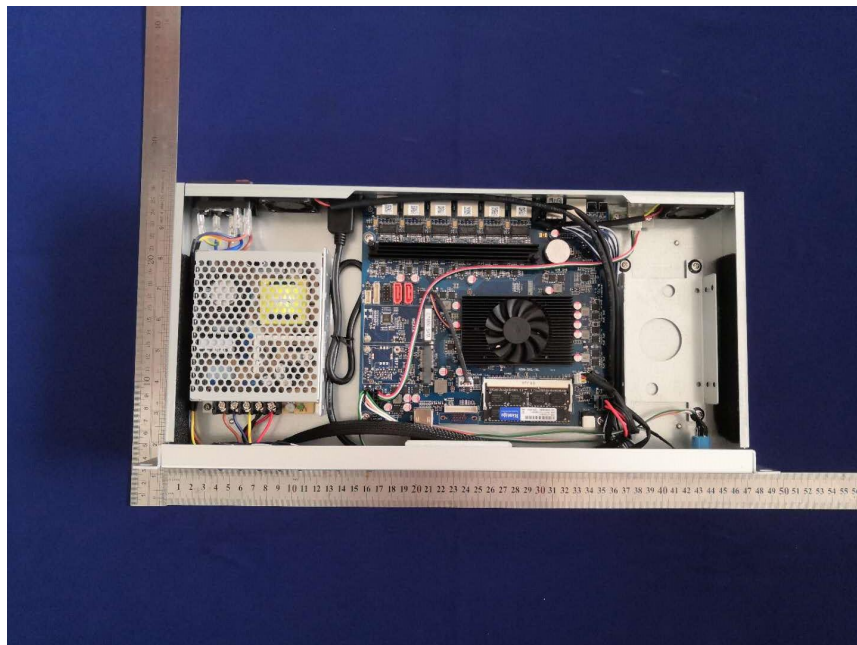
Test Report

No.JQL200928699-3R

Date: Oct. 13, 2020

Page 7 of 7

Sample Photo:



******* END OF REPORT *******

This Test Report is issued by the Company subject to its General Conditions of Service printed overleaf. Attention is drawn to the limitations of liability, indemnification and jurisdictional policies defined therein. The results shown in this test report refer only to the sample(s) tested unless otherwise stated and the sample(s) are retained for 30 days only. This Test Report cannot be reproduced, except in full, without prior written permission of the Company.